

MODEL DHE-DRI

FORKLIFT DRUM ROTATOR

Instruction Manual





DHE Materials Handling Equipment

Forklift Drum Rotator

Instruction Manual

DHE Materials Handling Equipment
28 Aster Avenue
Carrum Downs VIC 3810
Phone: 1300 067 281
Fax: (03) 9775 1662
Website: www.dhemhe.com.au



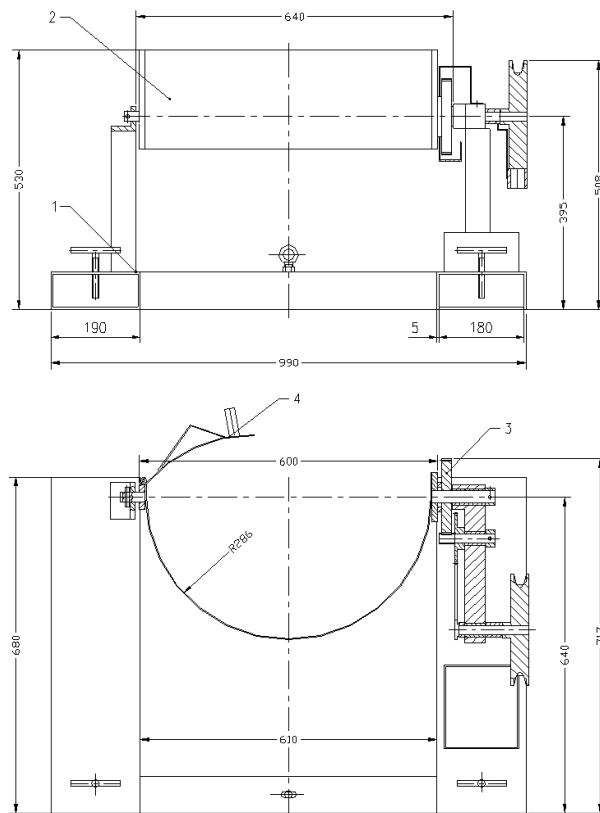
Table of Contents

1.0: FIGURE AND DIMENSION	3
1.1 : FIGURE.....	3
1.2 : TECHNICAL SPECIFICATION	3
2.0: OPERATING PROCEDURE	4
3.0: WARNING	5

- The Forklift Drum Rotator converts your forklift into a drum handler.
- It can easily lift, transport, raise and tilt loaded 210 Litre Steel Drums.
- The 10' pull-chain loop allows control from the driver's seat.
- It has a 30:1 ratio.

1.0 : Figure and Dimensions

1.1: Figure



1.2: Technical Specification

Model	DHE-DRI
Safe Working Load (SWL)	365kgs
Unit Weight	70kgs
Horizontal Centre of Gravity	670mm
Vertical Centre of Gravity	250mm
Load Centre	1030mm

2.0 : Operating Procedure

- Adjust the forks so that the inside width between the forks is 24 ½" minimum. One fork must be locked to bed plate.
- Drive the forklift forward to slip forks into fork sleeves. Attach safety chain to mast to secure Forklift Drum Rotator to forks.
- Open carrier cradle full width and hook cradle chain on stud.
- Drive truck with forks near – floor level to position Forklift Drum Rotator around the drum. Lock drum in place by clinching chain with ratchet tightener.
- Remove control chain from box and place end of loop near operator's seat.
- Raise forks and transport drum in Vertical position.
- To pour drum pull on chain, rotating drum to angle required for emptying. For best control of drum pouring angle, pay out one side of the loop while pulling in the other.
- After emptying, rotate drum back to vertical position and drive the forklift to deliver drum.

3.0 : Warning

- Do not use this product if the unit appears to be in any way damaged.
- Do not stand under or near the forklift when the drum is lifted.
- Do not overload the Forklift Drum Rotator beyond its rated capacity.
- The hoop must clamp the middle position of the drum when lifting the drum.
- The location of the drum should be lower when not in operation.
- The drum should be vertical and clear of the ground to avoid damaging whilst the forklift is moving.