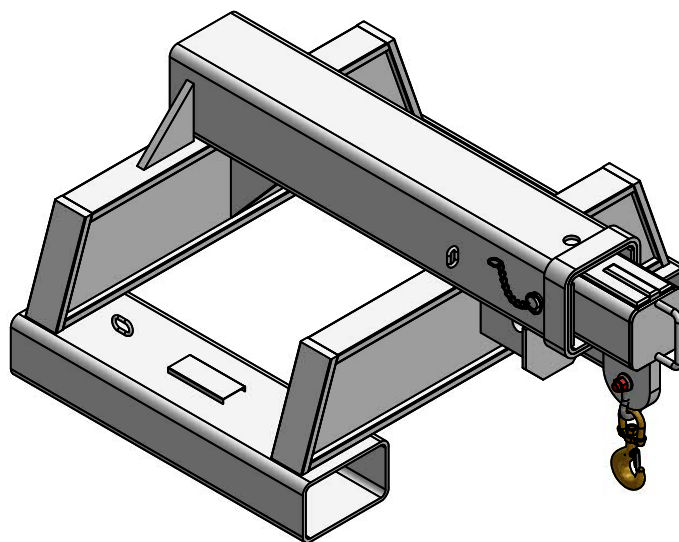
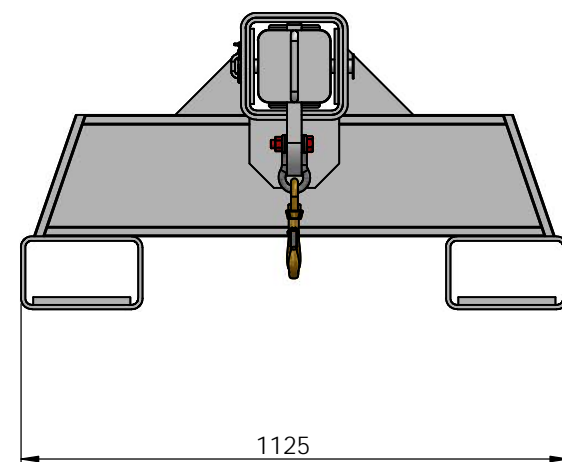
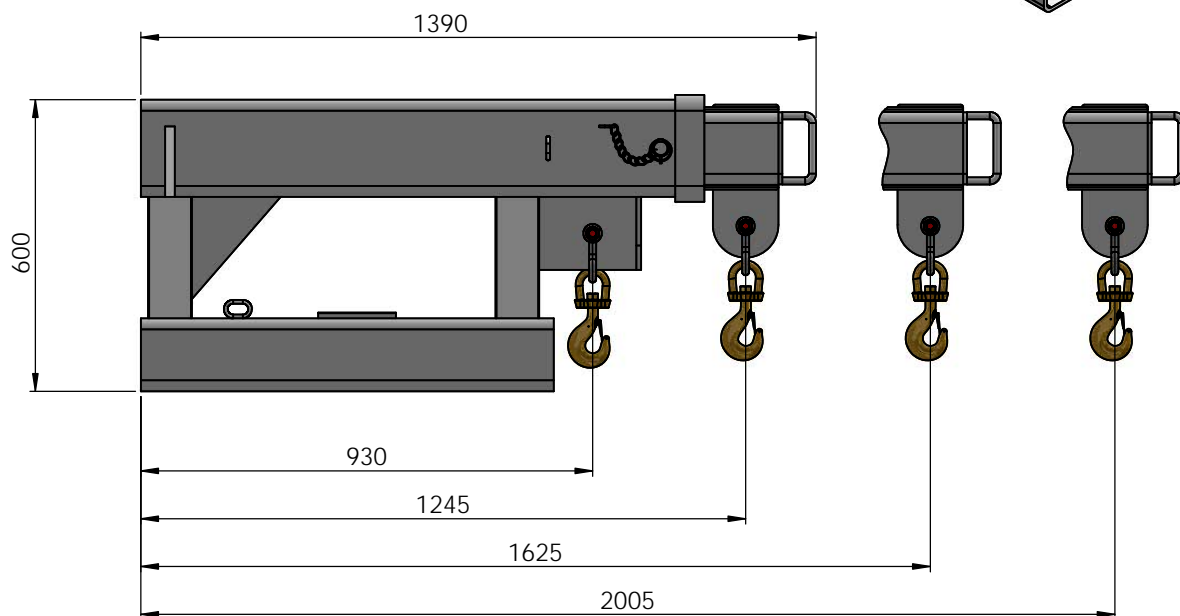


SAFE WORKING LOADS (SWL) PER POSITION

POSITION	1	2	3	4
EXTENSION	930	1245	1625	2005
SWL (kg)	9500	4800	3600	3000



SPECIFICATIONS:	
Safe Working Load (SWL)	10000kg Max.
Unit Weight	400kg
Load Centre	930mm
Pocket Size	250 x 150
Pocket Centres	875mm
Horizontal C of G	740mm
Vertical C of G	100mm
Zinc Finish	



(Specifications subject to change)

FORKLIFT JIB FIXED - 10 TON (SHORT)

© DHE MATERIALS HANDLING EQUIP 2021

ALL DIMENSIONS IN MM

SHEET 1 OF 1

